



# Titan Splicer

## Model 172

Airbond's Titan splicer sets a new standard as a highly effective, user-friendly tool for a wide range of continuous-filament synthetics and natural fibers (including fiberglass, POY, carbon fiber, nylon, polyester, wool and cotton). Using our new ergonomic handle design, operators can easily achieve a perfect splice on a wide range of yarn deniers (from very fine yarn counts to **up to 11,000 denier**). In field tests, **100% bond strength** is achieved for every splice with a very low yarn profile. Unlike tail splicing, bulky knots are eliminated and replaced with a less invasive bond that will last much longer.

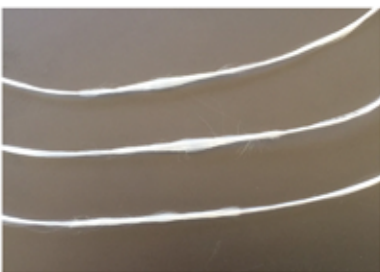
The Titan splicer occupies the market position for which splicers were original developed – relatively fine yarns for traditional textile applications. It is the ideal splicer for lower yarn counts. Hand-held, fixed, or rail-mounted, the Titan can meet most factory needs. And if circumstances change, it is convertible from one mounting form to another. The Titan can also be supplied with a blast timer, or with a differential flow control system which supplies low-pressure air to the blast chamber, while keeping full pressure for the cutters.

Made from a polymer construction, our Titan splicer is durable with very low maintenance. Airbond's blades last months before needing changing. And seal leaks are prevented by the air chamber being completely enclosed with dense polymer.

Send us a sample of your yarn and we'll be happy to perform some splicing tests to determine best settings for your needs. We offer a **30 Day Trial Guarantee** on all our splicers. We want you to see how this new technology will work for you! Contact us now, and we'll be happy to help find you the perfect solution.



**Ends Opposed  
Splicing**



**100% Bond Strength  
Low Profile**



**Splice format:** Ends opposed

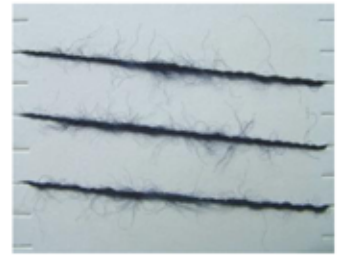
**Applications:** All standard textile processes.

**Yarn counts:** From fine yarns to 1200 tex (11,000 denier)

**Yarns:** Nylon, Polyester, Fiberglass, Wool, Cotton, POY,  
Carbon fiber, & more!

## Stronger Splice

Ends opposed splicing allows for a much stronger bond rather than ends together (tails), which creates problems with downstream processes (needles, snag points, etc.). The Titan splicer can create a splice with 100% bond strength. A splice that's barely visible, trouble free, and lasts.



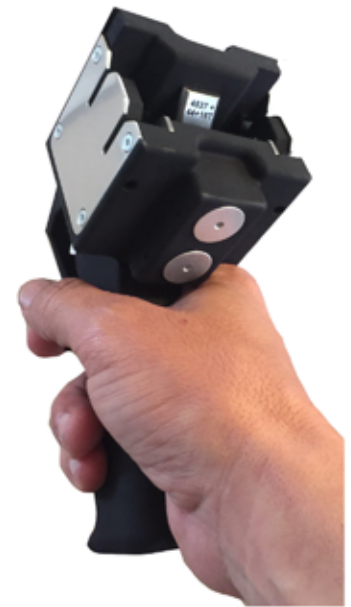
## Polymer Construction

Heavy metal parts & bad seals are a thing of the past through the use of our durable polymer construction. Using industrial 3D printing technology, our simplistic design minimizes moving parts for a better splice.

**Durable** Lasts longer & maintains better seal integrity than bulky, metal splicers.

**Light Weight** Our polymer construction greatly reduces the weight from metal.

**Low Maintenance** Simplistic design affords easy maintenance & longevity with our splicers. Air chambers can easily be changed out if damaged or different size is needed. Our cutter blades cut better and lasts months longer than standard splicer blades. Try our sample offer & see for yourself.



## Hands Free Operation

Because of our 3D printing capabilities, Airbond offers simple solutions for your yarn process. Each splicer can include a wall mount attachment built into the handle. Using our easily affordable Easy Mount clips which can be mounted anywhere, operators have a place to mount the splicer while they splice the yarn. Reducing time, frustration, & risk of dropping.



**Easy Mount Clips**

